

KEY FEATURES

- Manifesting
- Packaging
- Auto Generation of Delivery
- Auto Generation of Invoice
- Freight Rate Quoting
- Insurance Calculations
- Ten Additional Charge Calculations per Carrier, per Customer
- Tracking Number Update
- Email Shipping Notification
- Customer Specific Shipping

SAP BUSINESS ONE ALLOWS YOU TO CREATE QUOTATIONS, SALES ORDERS, DELIVERIES, AND AR INVOICES. BUT ALONG THE WAY, ORDERS HAVE TO BE SHIPPED.

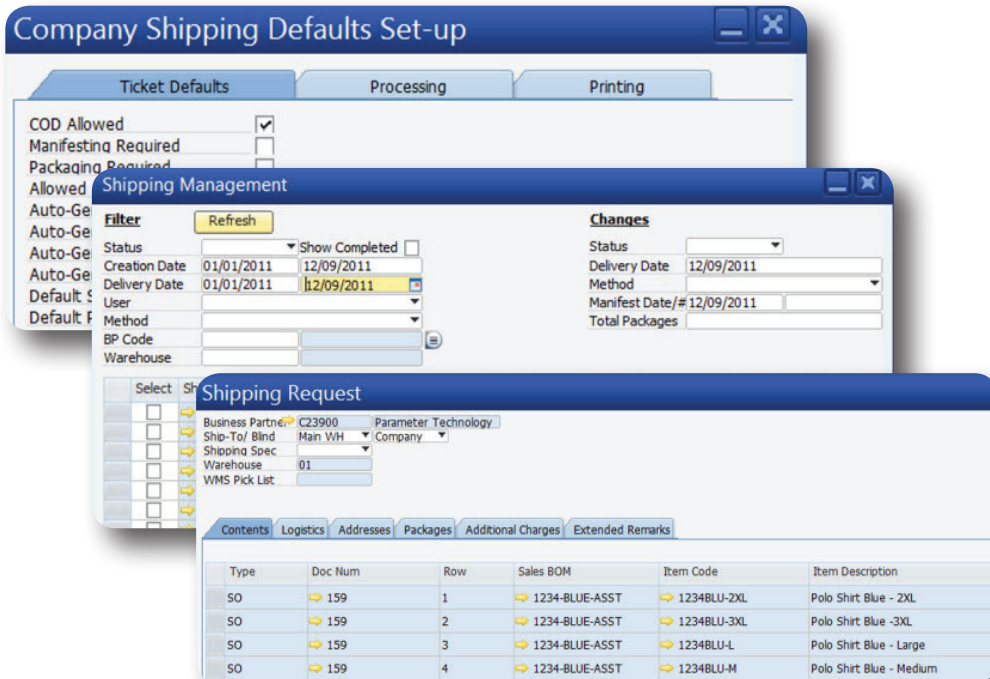
Many companies use separate computer systems for UPS, FedEx and other carriers. Maintaining multiple databases for customer addresses and entering information for each shipment is time-consuming and a likely source of errors.

The Achieve Freight Control module serves as a bridge between SAP Business One and the carrier shipping systems. All relevant information for each order is copied to a shipping request document. Operators may enter the quantity shipped or packaging

information to verify shipping charges. The data is transmitted to the carrier's system and final charges with tracking numbers are returned. Finally, the delivery document or invoice may be automatically created from the shipping request.

In addition, Achieve Freight Control includes a rate shopping feature, which allows operators to view shipping rates by various carriers and shipping options, from within the sales order screen. This enables them to provide accurate estimates of shipping charges to customers at the time the order is placed.

As with all Achieve One modules, Achieve Freight Control is built specifically for SAP Business One, utilizing the advanced technical architecture of the SAP Business One Software Development Kit.



- Shipping Request Processing
 - » Created From Sales Order, Reserve Invoice or Pick Ticket
 - » Consolidate Items from Multiple Sales Orders into Single Shipments
 - » Option to Automatically Create Deliveries or Invoices
- Shipping Status Tracking
 - » Pending
 - » Release to Pack
 - » Packed & Ready to Ship
 - » Shipping Information Requested/Received
 - » Shipped
 - » Manifested
 - » Completed

- Package Entry
 - » Multi Package Processing per Shipment
 - » Standard Packaging
 - » Fast Pack
 - » Scan Pack
 - » Re-Pack
 - » Fast Scan for quick packing of serial & batch numbers
 - » Package View by Item or Package
- Shipping Management Global Update of Open Shipping requests
Select Shipping Requests to be changed by:
 - » Status
 - » Created or Delivery Date
 - » User
 - » Customer
 - » Shipping Method
 - » Warehouse
- Globally Change Selected Shipping
 - » Status
 - » Delivery Dates
 - » Shipping Method
 - » Manifest Date

COMPARISON OF FEATURES	Achieve Freight Control	SAP Business One
Shipment Tracking Number	✓	✓
Enter Freight on Orders	✓	✓
View Comparative Freight Rates	✓	
Shipping Request Document	✓	
Freight Billing Instructions	✓	
Additional Freight Charges	✓	
Automatic Creation of Delivery from Pick Ticket	✓	✓
Automatic Creation of Delivery from Shipping Request	✓	
Batch Creation After Shipment	✓	
Automatic Entry of Freight Charges	✓	
Automatic Entry of Tracking Numbers	✓	
Manifesting	✓	
Auto Generation of Invoice	✓	
Freight Rate Quoting	✓	
Insurance Calculations	✓	
Ten Additional Charge Calculations per Carrier (per customer)	✓	
Tracking Number Update	✓	
Customer Specific Shipping Defaults	✓	
Package Entry	✓	✓
Multi Package Processing Per Shipment	✓	✓
Standard Packaging	✓	✓
» Fast Pack	✓	
» Scan Pack	✓	
» Re-Pack	✓	
» Fast Scan Option – For Quick Packing of Serial & Batch Numbers	✓	
» SAP Business One	✓	
» Package View by Item or Package	✓	
» Global Update of Open Shipping Requests	✓	

SAP is a registered trademark of SAP AG in Germany and in several other countries. All other trademarks are the property of their respective owners.